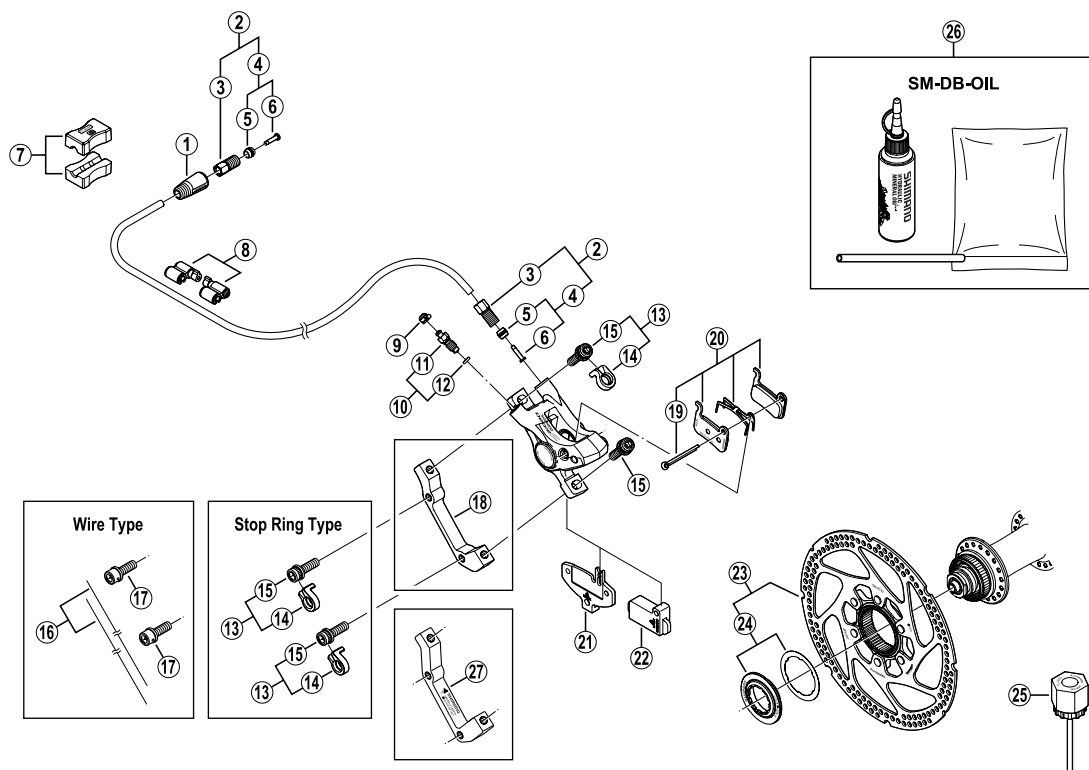


DEORE LX Rear Disc Brake

BR-M585 Brake Caliper
SM-RT62 Disc Rotor

SM-BH59 Brake Hose



ITEM NO.	SHIMANO CODE NO.	DESCRIPTION
1	Y-8H2 03010	Cover
2	Y-8H2 98010	Connecting Bolt Unit
3	Y-8H2 01000	Connecting Bolt
4	Y-8H2 98020	Olive & Connecting Insert
5	Y-8H2 04000	Olive
6	Y-8H2 02000	Connecting Insert
7	Y-8H1 98030	TL-BH61 Special Tool (2 pcs.)
8	Y-830 98040	SM-HANG Hose Supporter A & B
9	Y-8B2 14000	Bleed Nipple Cap
10	Y-8CL 98050	Bleed Nipple & Seal Ring
11	Y-8CL 24000	Bleed Nipple
12	Y-8B5 11001	O-Ring for Bleed Nipple
* 13	Y-8DS 98010	Adapter Fixing Bolt & Stop Ring
14	Y-8C5 11000	Stop Ring
* 15	Y-8C5 09020	Adapter Fixing Bolt (M6 x 18.7) for Stop Ring Type
16	Y-8B2 98010	Wire (2 pcs.)
17	Y-8B5 12000	Adapter Fixing Bolt (M6 x 19) for Wire Type
18	Y-8DB 10000	A-Standard Mount Adapter for Disc Rotor ϕ 160 mm
19	Y-8DB 06000	Split Pin
20	Y-8CY 98010	Resin Pad (M07S) & Spring w/Split Pin
	Y-8CL 98010	Metal Pad (M06) & Spring w/Split Pin
21	Y-8CL 12000	Pad Spacer
22	Y-8CL 18000	Spacer for Bleeding
23	Y-8HS 98010	SM-RT62 Disc Rotor Unit (ϕ 160 mm)
	Y-8HS 98060	SM-RT62M Disc Rotor Unit (ϕ 180 mm)
24	Y-8HS 98030	Lock Ring & Washer
25	Y-120 09230	TL-LR15 Lock Ring Removal Tool
26	Y-839 98010	Mineral Oil Bleed Kit (50 ml)
27	Y-817 71000	A-Standard Mount Adapter (SM-MA-R180P/S) for Disc Rotor ϕ 180 mm

0508-2375C

Specifications are subject to change without notice.

SHIMANO