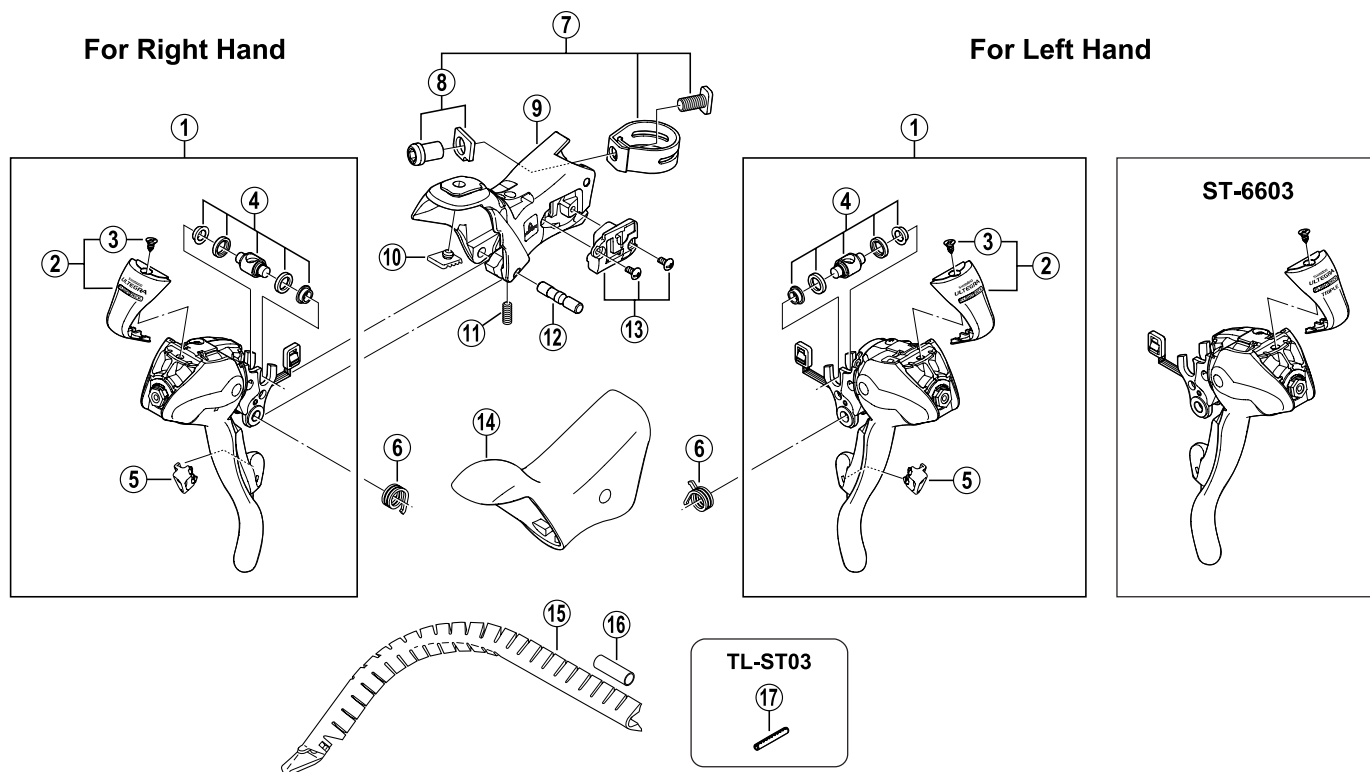


SHIMANO ULTEGRA Dual Control Lever (FLIGHT DECK Compatible)

ST-6600 For Double Gear

ST-6603 For Triple Gear



ITEM NO.	SHIMANO CODE NO.	DESCRIPTION
1	Y-6K2 98010	R.H. Main Lever Assembly
	Y-6K2 98030	L.H. Main Lever Assembly for ST-6600
	Y-6K2 98040	L.H. Main Lever Assembly for ST-6603
2	Y-6K2 98020	Name Plate & Fixing Screw
	Y-6K2 98050	Name Plate & Fixing Screw for ST-6603
3	Y-6K2 19000	Name Plate Fixing Screw
4	Y-6BD98110	Cable Hook Unit
5	Y-6K2 18000	R.H. Release Lever Support
	Y-6K2 64000	L.H. Release Lever Support
6	Y-6K2 87000	R.H. Return Spring
	Y-6K2 87100	L.H. Return Spring
7	Y-6K2 98060	Clamp Band Unit (ϕ 23.8 mm – ϕ 24.2 mm)
8	Y-6JA 98050	Clamp Nut & Washer
	Y-6K2 98070	R.H. Bracket
	Y-6K2 98080	L.H. Bracket for ST-6600
9	Y-6K2 98090	L.H. Bracket for ST-6603
	Y-6K2 50000	Bump Rubber (1.45 mm)
	Y-6K2 50010	Bump Rubber (1.60 mm)
10	Y-6K2 50020	Bump Rubber (1.85 mm)
	Y-6BD76010	Lever Axle Fixing Screw
11	Y-6BS 84000	Lever Axle
12	Y-6JA 98080	R.H. Water-Proof Cap & Fixing Screws (M2.6 x 6)
	Y-6JA 98090	L.H. Water-Proof Cap & Fixing Screws (M2.6 x 6)
13	Y-6K2 98100	Bracket Covers (Pair)
14	Y-86B 90010	Outer Cable Guide
15	Y-877 11000	Outer Cable Joint
16	Y-130 03200	Return Spring Installation Tool (TL-ST03)

0405-2369